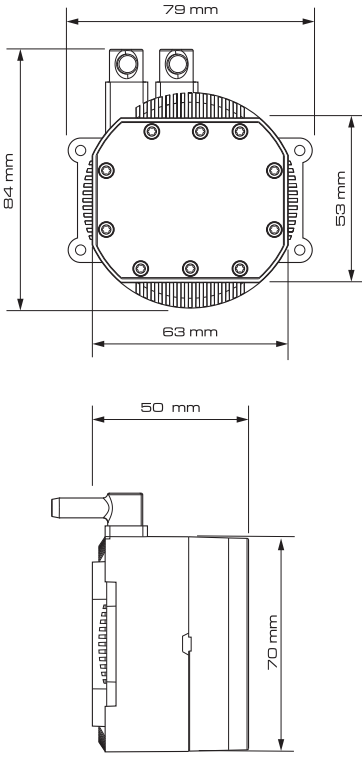




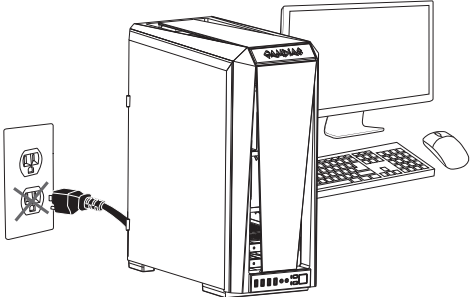
PUMP DIMENSIONS



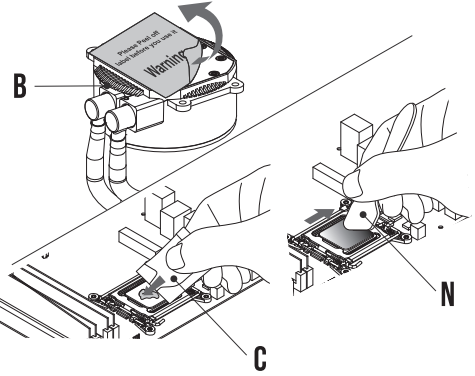
INTEL (LGA 1366/1700/115X/1200)

1

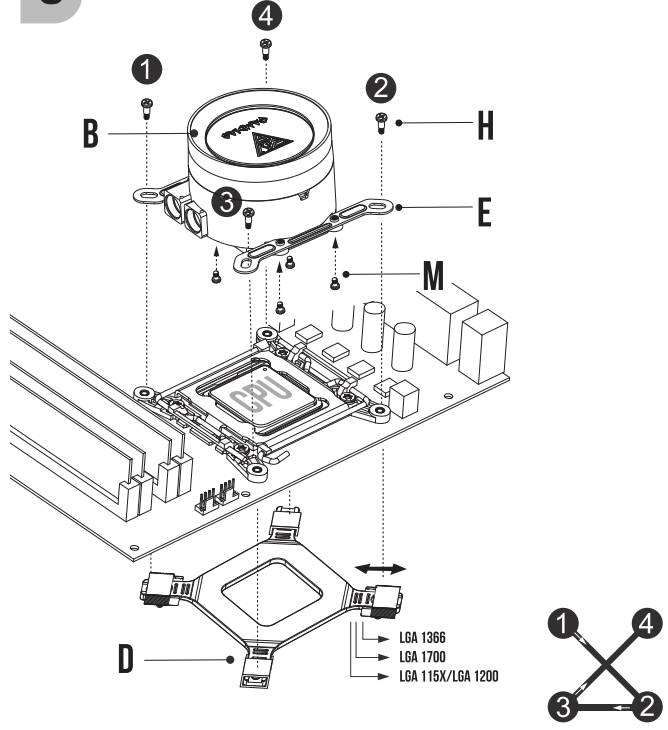
Turn off the computer before installing.



2



3



Please tighten the screws in a diagonal sequence to spread the tension properly.

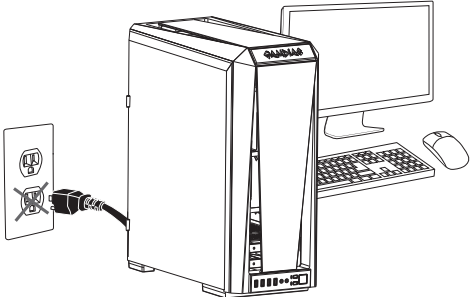
PACKAGE CONTENTS

- | | | | | | | | | | |
|----------|--|-----------------|-----------|----------|--|-----------|----------|--|-----------|
| A | | (LITE 2 ONLY) | X1 | E | | X2 | J | | X2 |
| B | | | X1 | F | | X2 | K | | X4 |
| C | | | X1 | G | | X2 | L | | X4 |
| D | | | X1 | H | | X4 | M | | X4 |
| | | | | I | | X4 | N | | X1 |

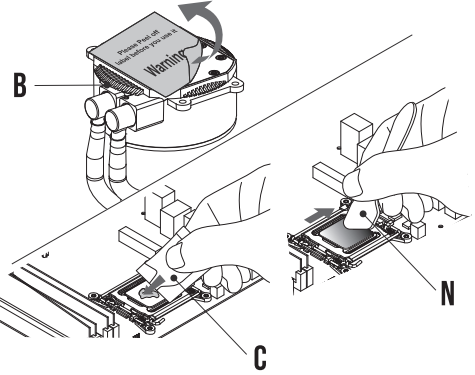
INTEL (LGA2066/2011/2011-3)

1

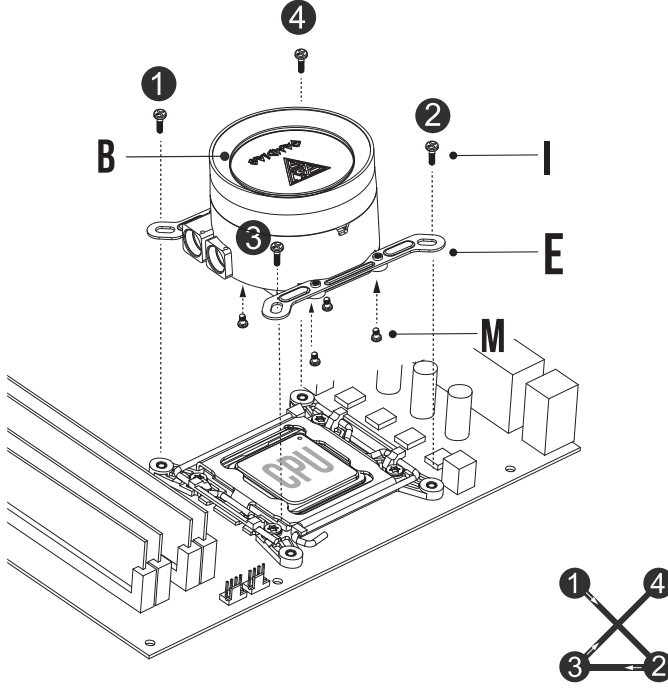
Turn off the computer before installing.



2

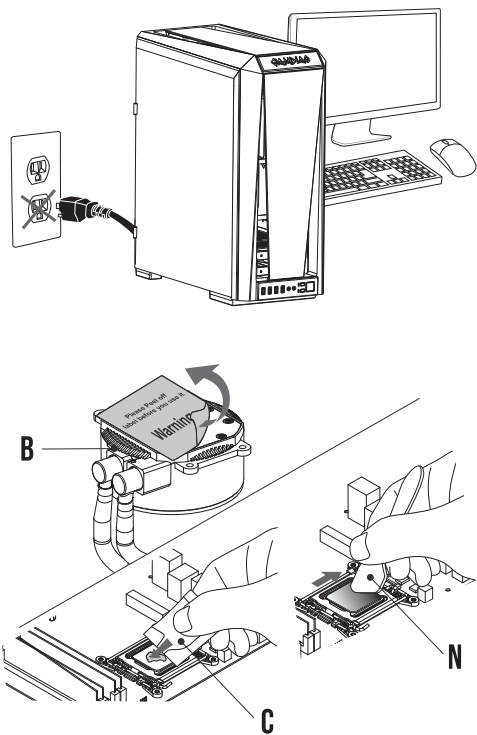


3

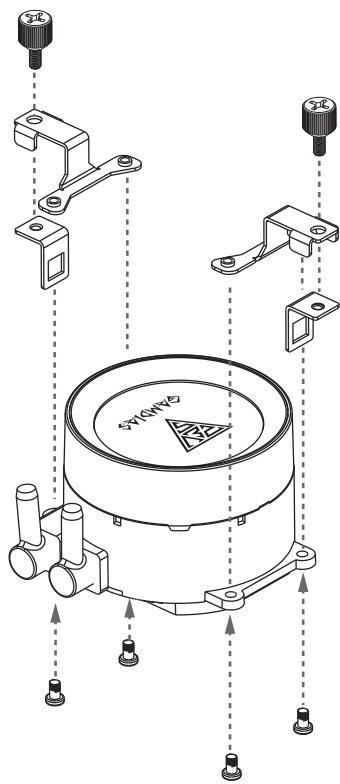


Please tighten the screws in a diagonal sequence to spread the tension properly.

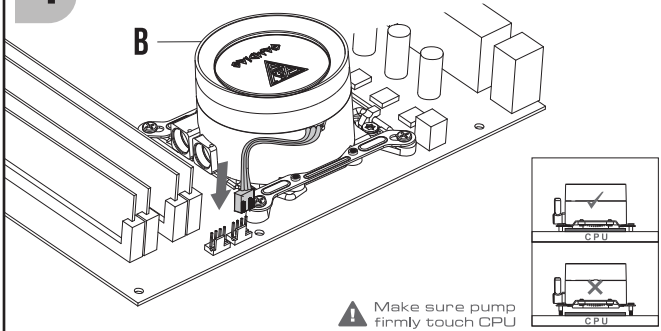
1 Turn off the computer before installing.



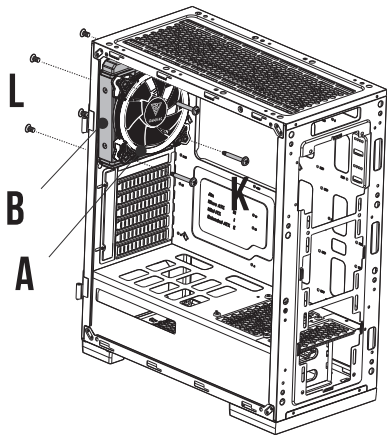
2



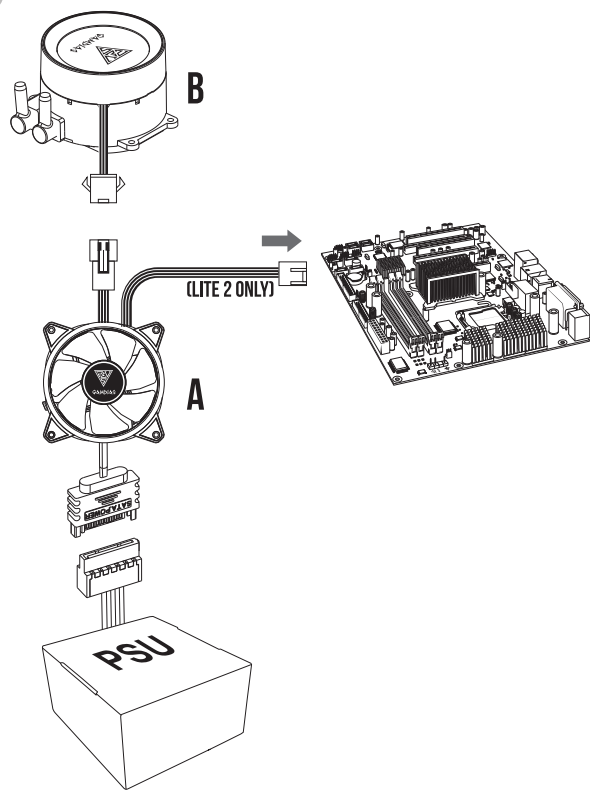
4



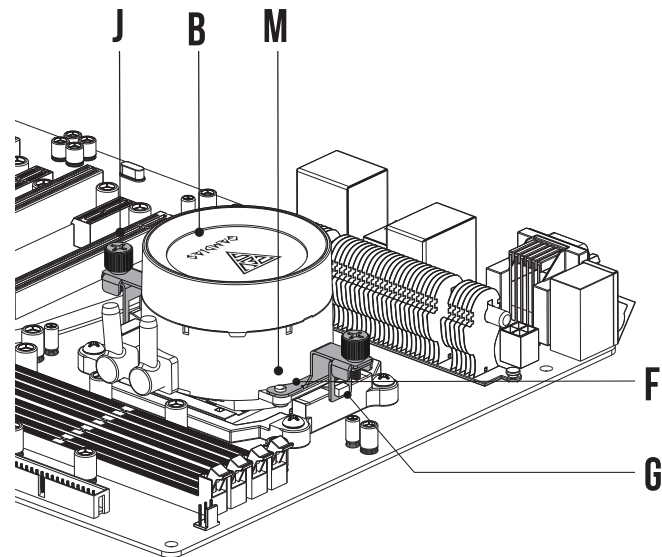
5



6

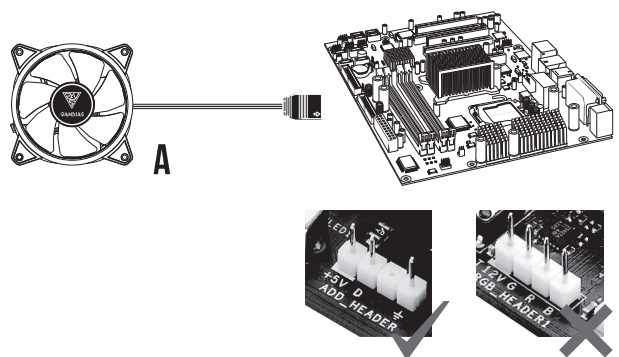


3

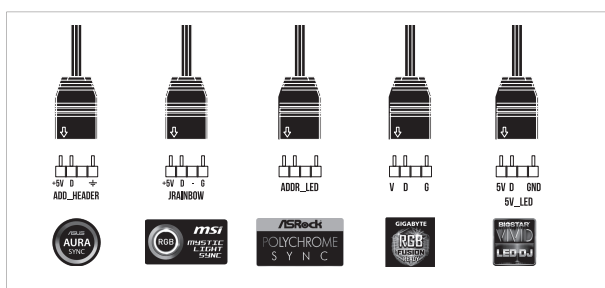


7

If your motherboard has 5V 3-Pin addressable (digital) RGB header, you can customize RGB lighting via motherboard manufacture sync software

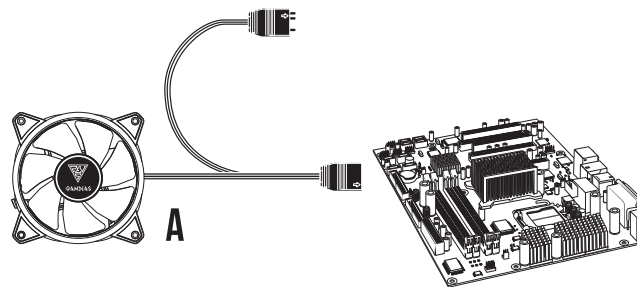


CHIONE E2-120 LITE2 only support 5V addressable (digital) RGB header



8

The design of male and female motherboard sync connectors to deal with insufficient 5V socket



Only support 5V addressable (digital) LED