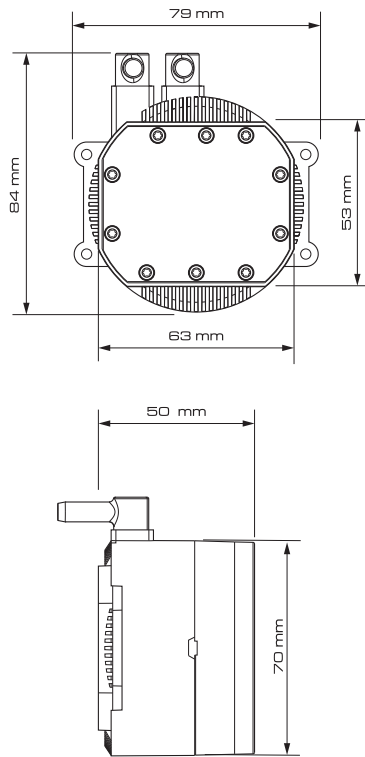


STEP by STEP  
INSTALLATION  
GUIDE



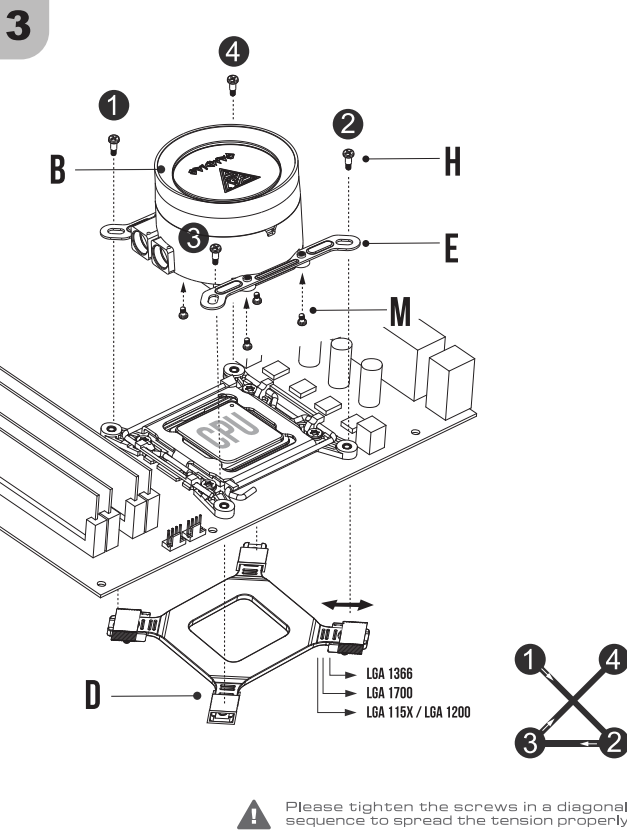
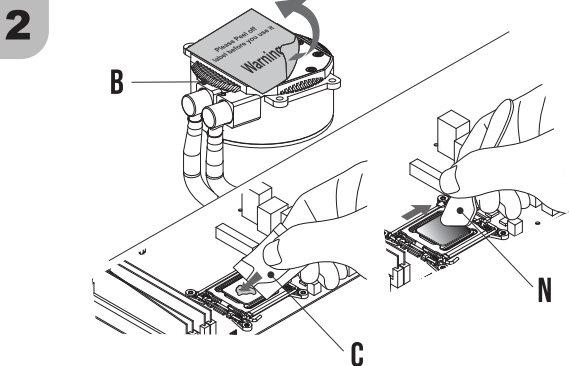
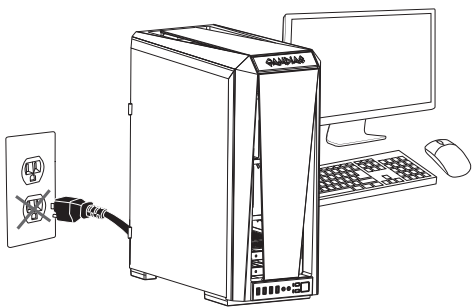
GAMDIAS  
**CHIONE M2**  
CPU Liquid Cooler

PUMP DIMENSIONS

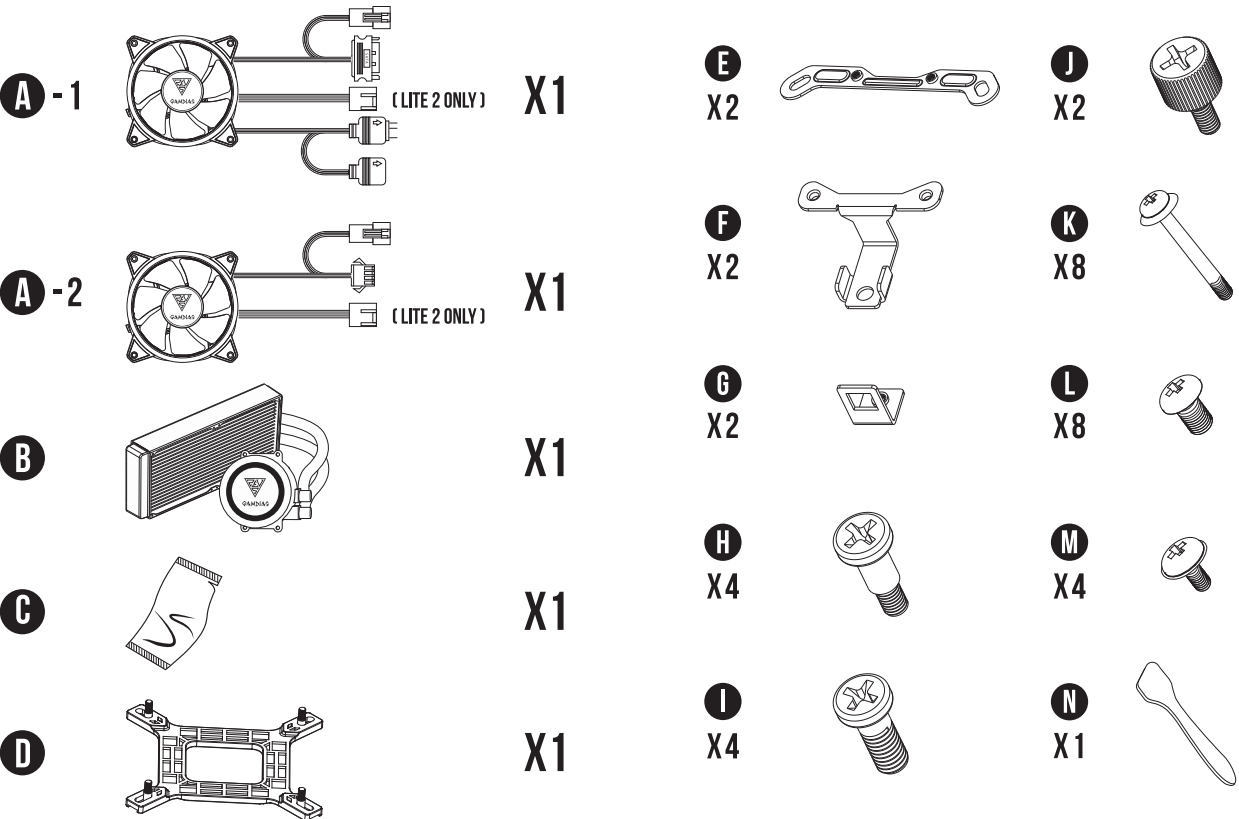


INTEL ( LGA 1366/1700/115X/1200 )

1 Turn off the computer before installing.

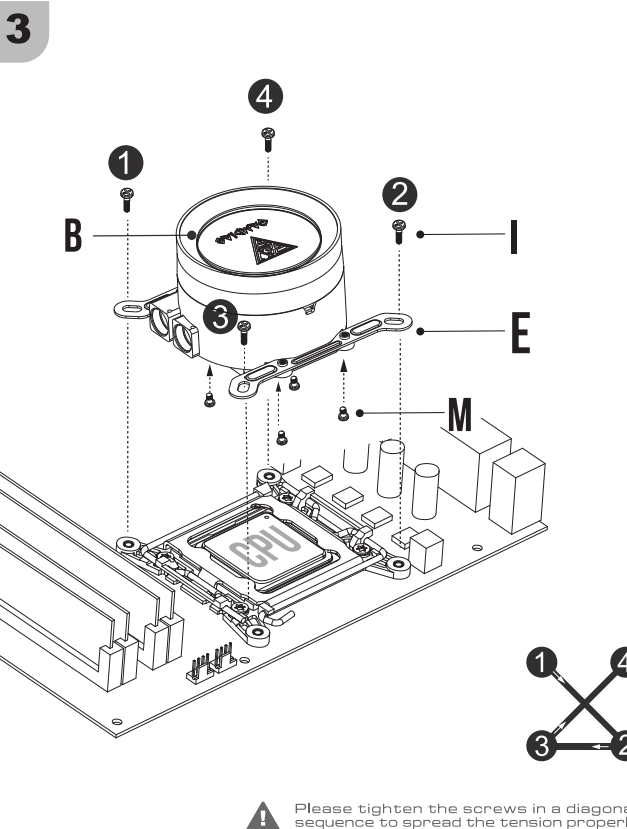
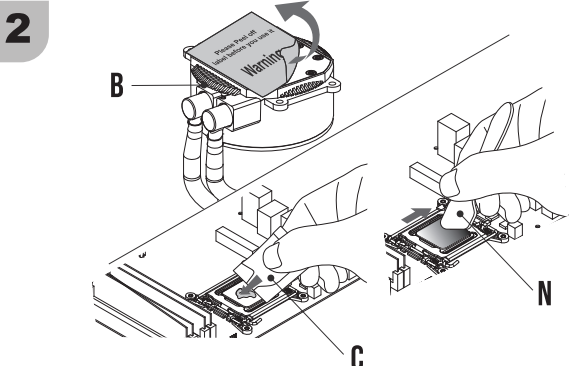
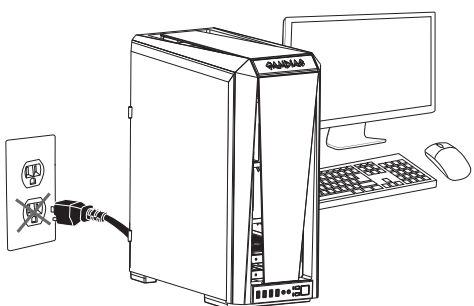


PACKAGE CONTENTS

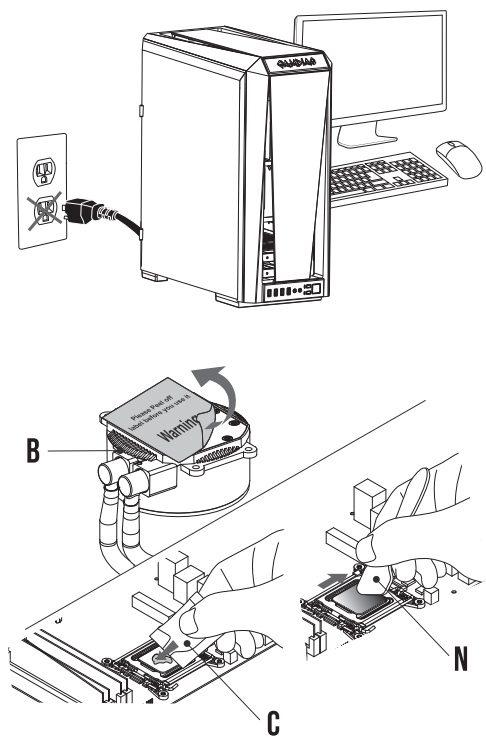


INTEL ( LGA2066/2011/2011-3 )

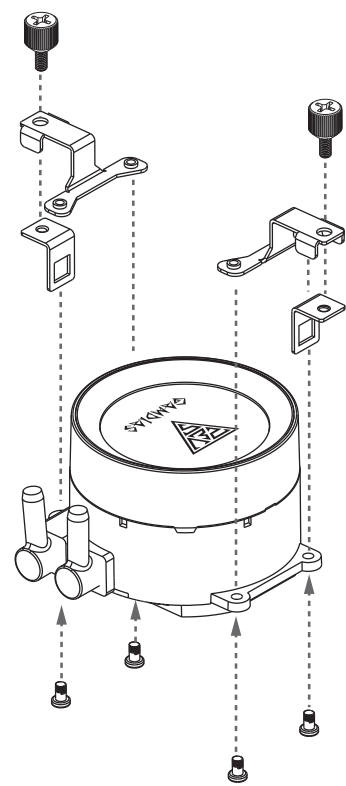
1 Turn off the computer before installing.



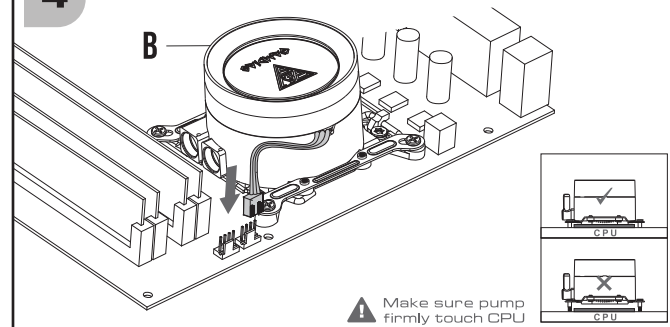
1 Turn off the computer before installing.



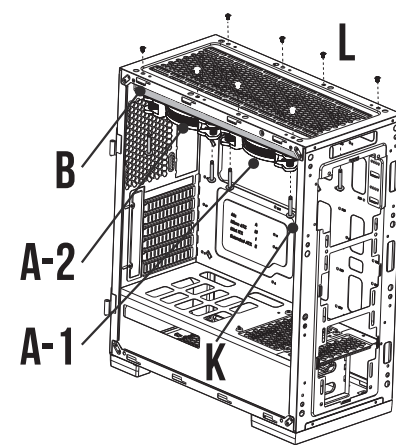
2



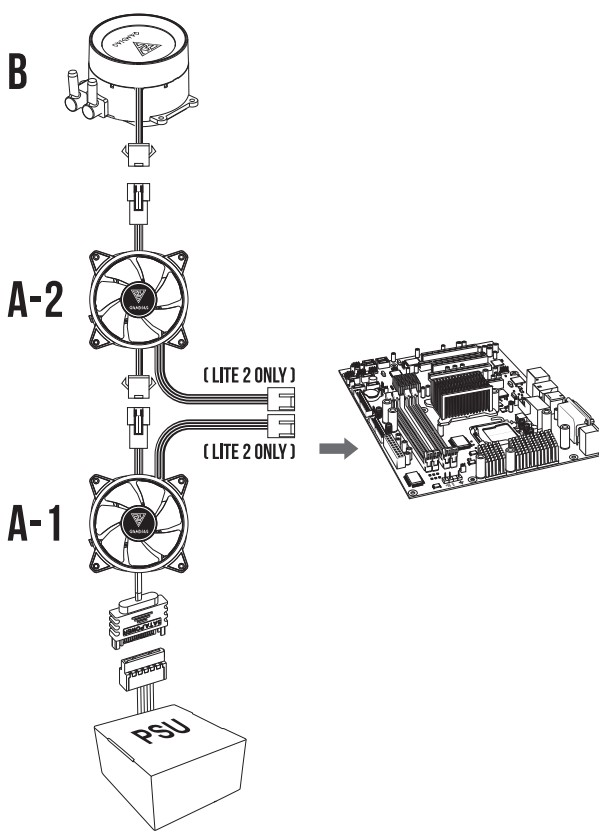
4



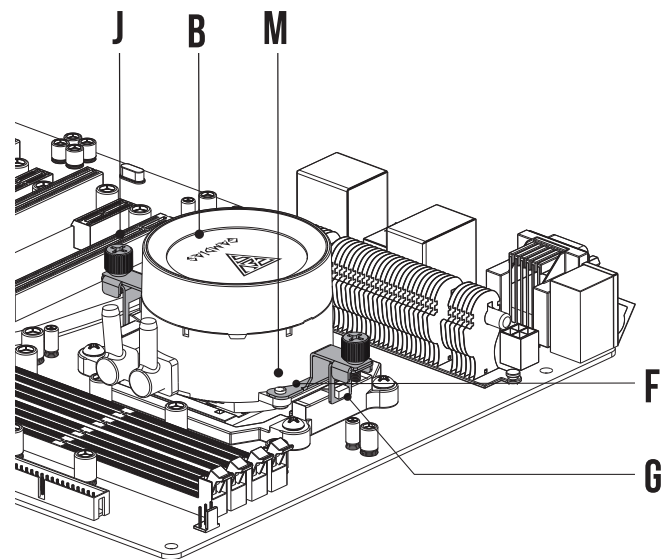
5



6

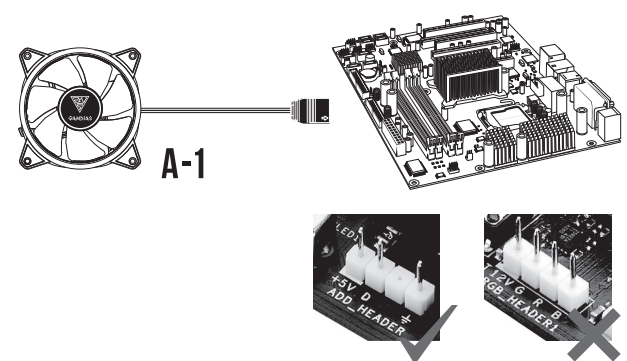


3

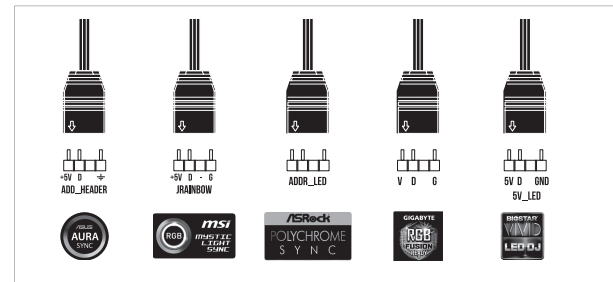


7

If your motherboard has 5V 3-Pin addressable (digital) RGB header, you can customize RGB lighting via motherboard manufacture sync software

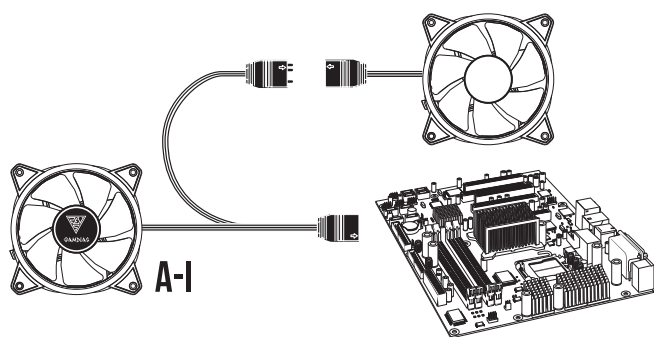


CHONE M2-240 LITE2 only support 5V addressable (digital) RGB header



8

The design of male and female motherboard sync connectors to deal with insufficient 5V socket



Only support 5V addressable (digital) LED