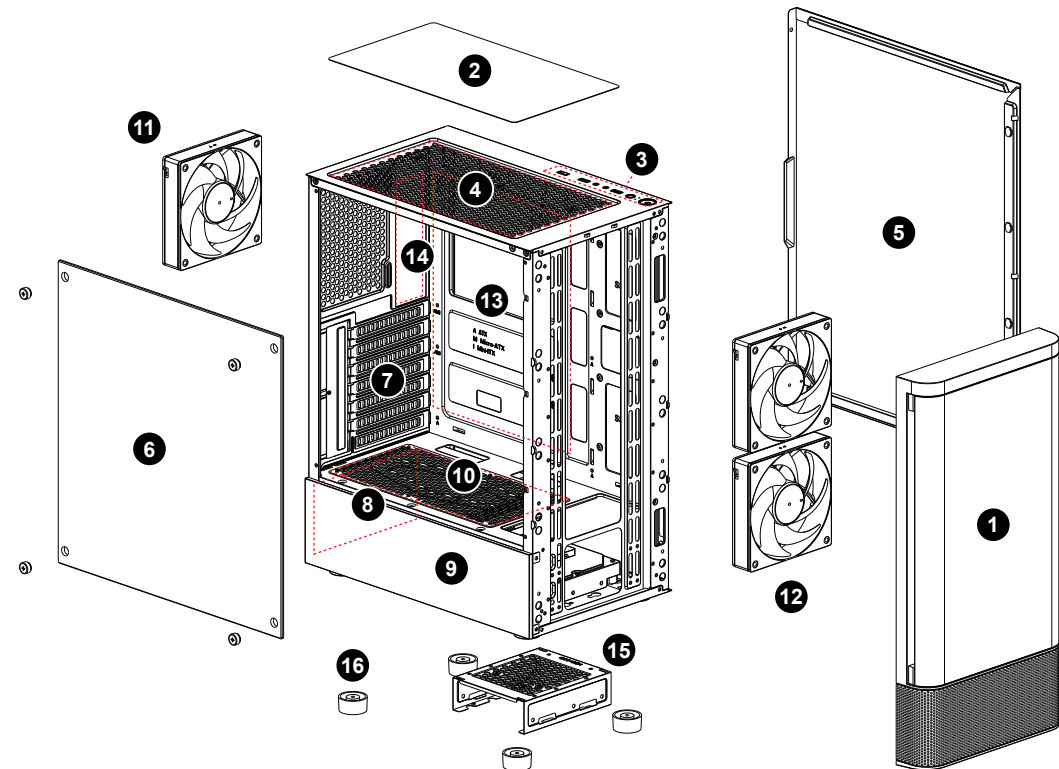


TALOS E3 CG

MID-Tower PC Case

▼ Case Layout and Parts Identification



1. Front Panel

2. Top Megnetic Dust Filter

3. IO Port Module

4. Top Radiator (Fan) Mounting Holes

5. Right Side Panel

6. Left Side Tempered Glass

7. PCIe Slots

8. Power Supply Unit Mounting Hole

9. Power Shroud

10. Power Shroud Fan Mounting Hole
11. Rear Fan

12. Front Fans

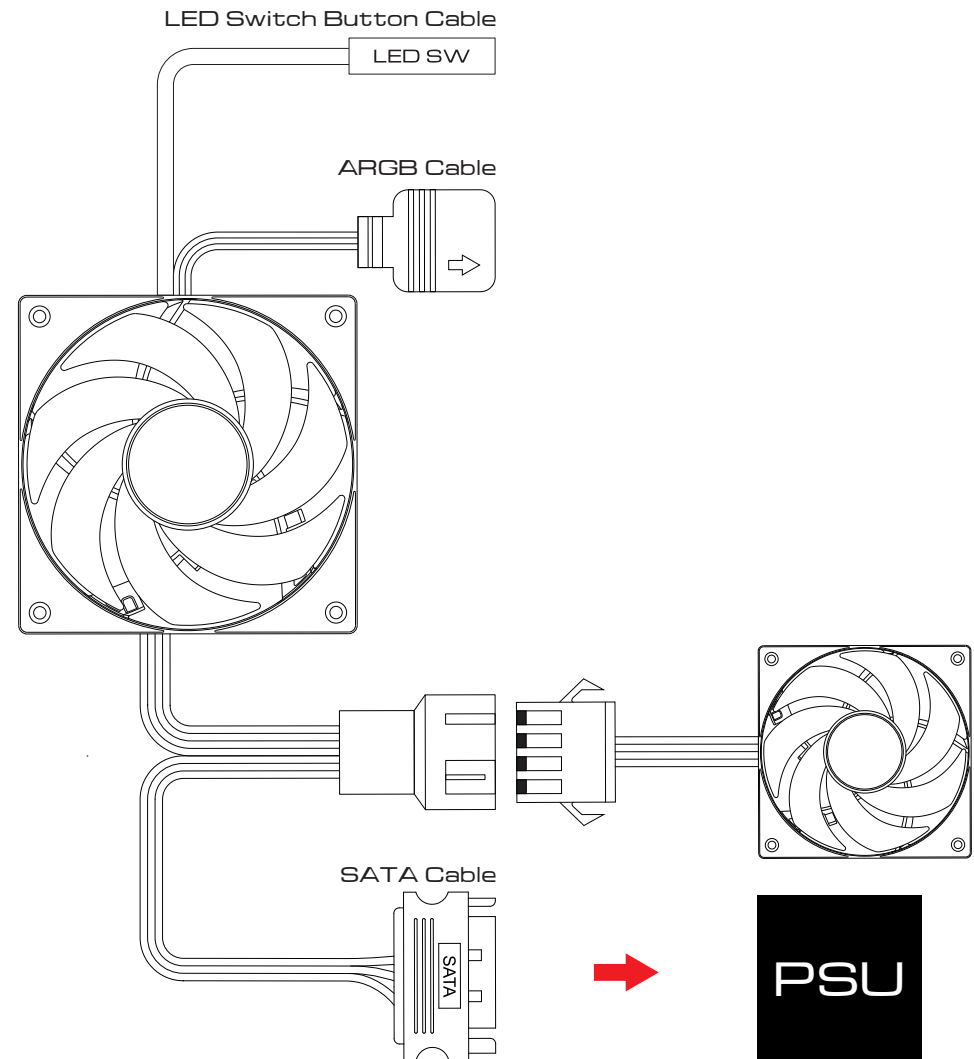
13. Motherboard Placement

14. Motherboard Mounting Holes

15. HDD/ SSD Cage

16. Chassis Pedestals

▼ Fan Cable



▼ Safety Information

1. General Safety Warnings

Always ensure the computer case is placed on a stable, flat surface to prevent it from tipping over. Keep the case away from water, moisture, or high humidity environments to avoid electrical hazards. Do not block or obstruct the ventilation openings to ensure proper airflow and prevent overheating.
2. Electrical Safety

Disconnect the power supply before installing or modifying any internal components. Avoid touching internal components directly; always ground yourself to prevent static discharge, which can damage sensitive components. Use only compatible power supplies and cables, ensuring that all connections are secure and free from fraying or damage.
3. Handling Precautions

Handle the computer case with care during transportation to prevent physical damage. Use appropriate tools when assembling or disassembling components inside the case to avoid injury. Do not force components into place; ensure they align properly before securing them.
4. Fire Hazard Warnings

Ensure all components are properly ventilated and not overheating, as this can be a potential fire hazard. Avoid overloading electrical circuits connected to the computer case to prevent overheating and potential fire risks. Keep flammable materials away from the computer case.
5. Child Safety

Keep the computer case and its components out of reach of children. Do not allow children to play with or operate the computer case, especially when it is powered on.
6. Cleaning and Maintenance

Unplug the computer case from the power source before cleaning. Use a dry, soft cloth for cleaning the exterior of the case. Do not use liquid cleaners or aerosols. Periodically check and clean the ventilation openings to ensure proper airflow.
7. Installation Safety

Ensure that all components are installed correctly and securely before powering on the system. Double-check connections and screws to prevent potential hazards during operation. Follow the manufacturer's guidelines for component installation and ensure compatibility with the case.
8. Disposal Instructions

Dispose of the computer case and its components according to local electronic waste regulations.

▼ Case Layout and Parts Identification

1. Gaming Case : TALOS E3 CG

2. Chassis Protection : EPS Protection Foam

3. Chassis Dust Cover

4. Preinstalled Fans : GAMDIAS NOTUS Fans x 3

5. Accessory Box : Screws and Standoffs

A. Motherboard/ SSD screws

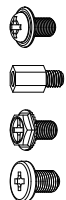
B. Motherboard additional standoffs

C. PSU/ GPU PCIe screws

D. HDD cage screws

6. Accessory Box : Cable Ties

E. Cable ties



▼ Case Layout and Parts Identification

1. Case Type: MID Tower

2. Motherboard Support: ATX, Micro-ATX, Mini-ITX

3. Expansion Slots: 7

4. Material: SPCC, ABS, Tempered Glass

5. Product Dimension : 363 x 210 x 447mm(14.3 x 8.3 x 17.6 inch)

6. Chassis Dimension : 330 x 210 x 430mm(13 x 8.3 x 16.9 inch)

7. Radiator Support : Top: 240 mm · Front: 360mm, 280mm · Rear:120 mm

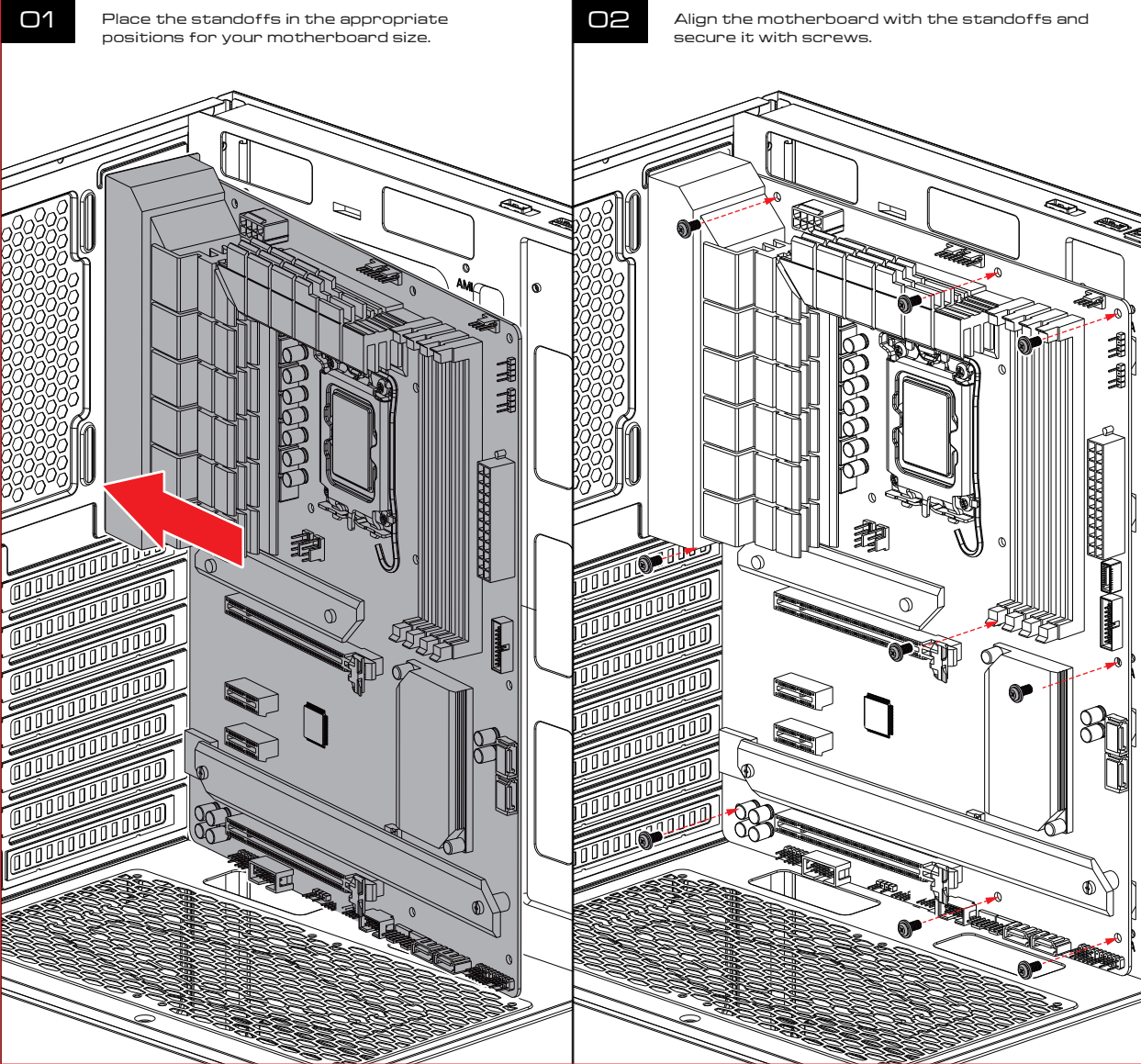
8. Fan Support : Top: 2 x 120mm · Front : 2 x 120 mm , 2 x 140mm · Rear: 1x 120mm

9. Motherboard Sync : 5V 3-Pin Addressable Header

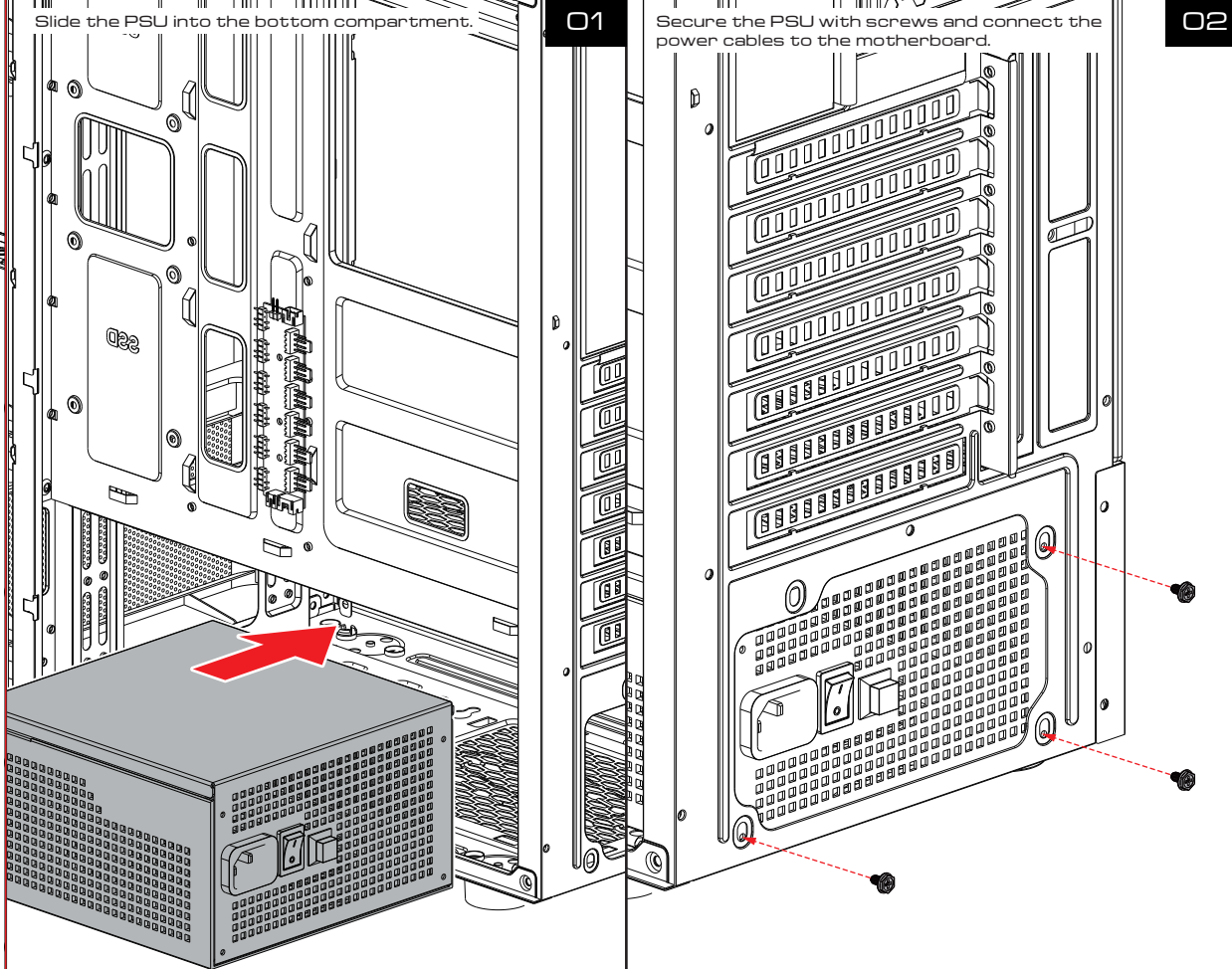
10. Drive Bays : 2 x 3.5" or 1 x 2.5"+1 x 3.5"(HDD Cage) · 2 x 2.5"

11. Clearance : CPU cooler height limitation: 160mm · VGA length limitation: 300mm · PSU length limitation: 150mm

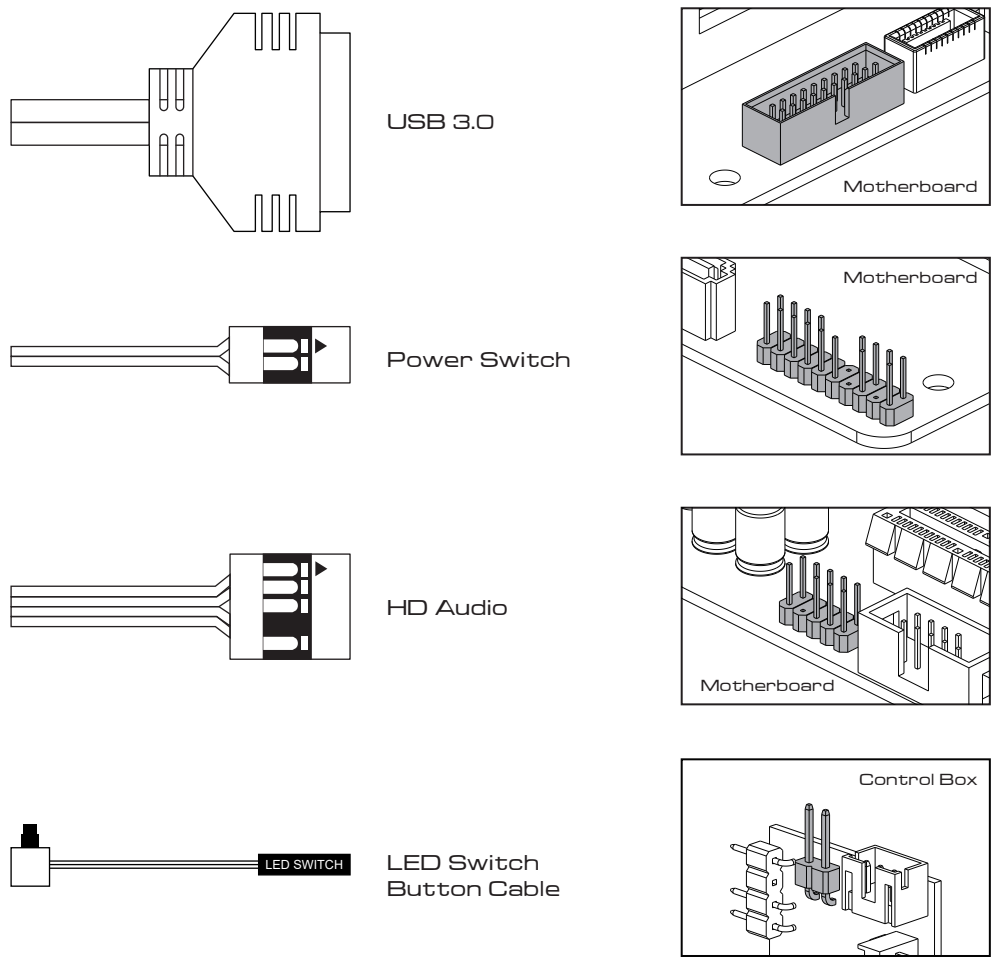
▼ Motherboard Installation



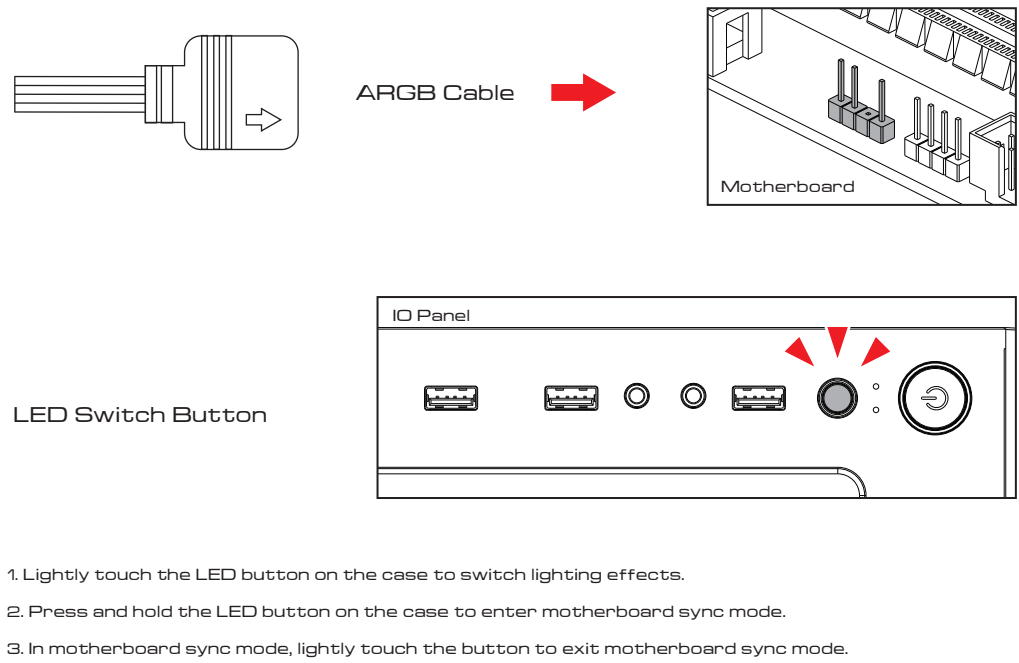
▼ Power Supply Unit (PSU) Installation



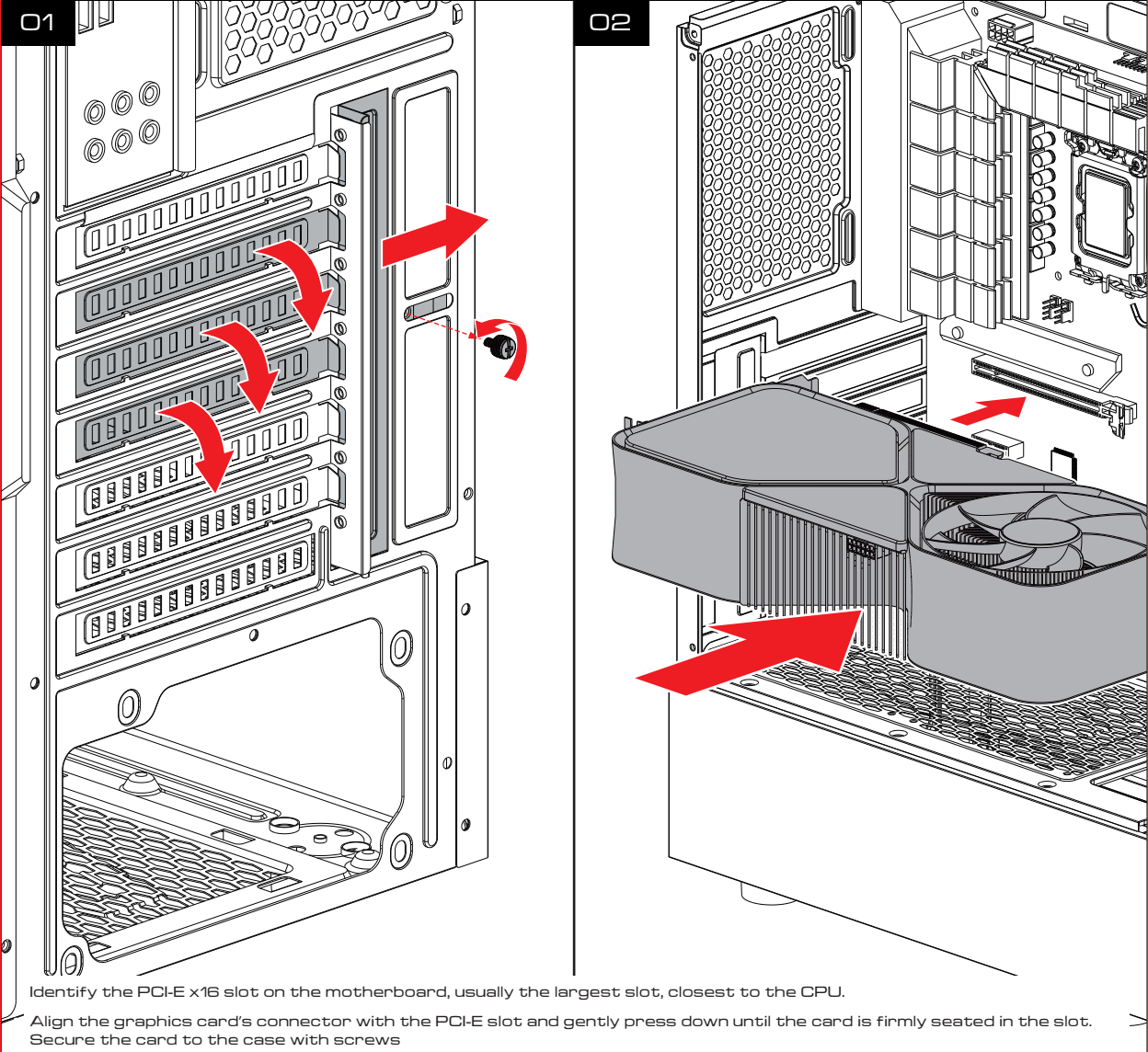
▼ Safety Information



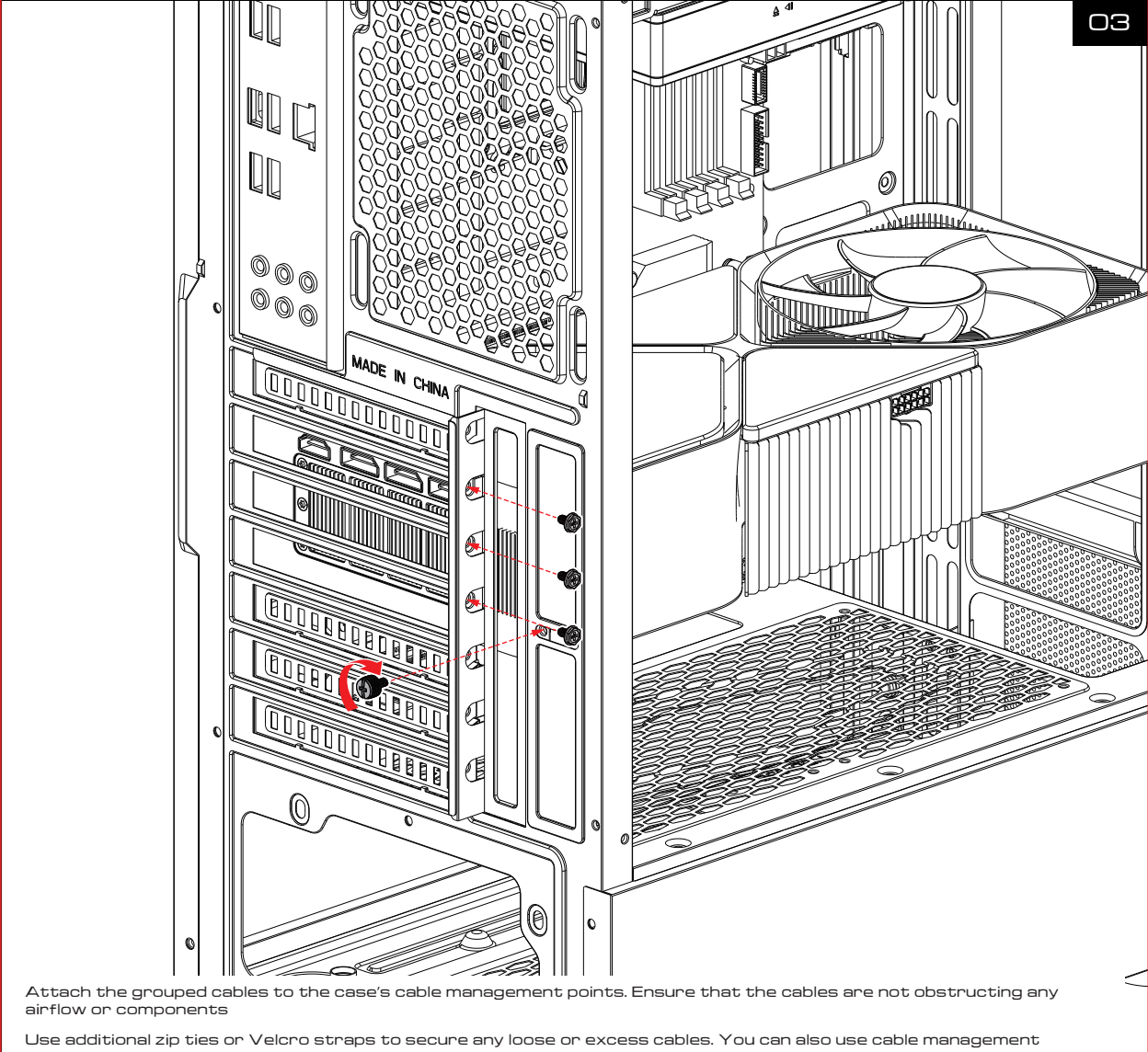
▼ Case Layout and Parts Identification



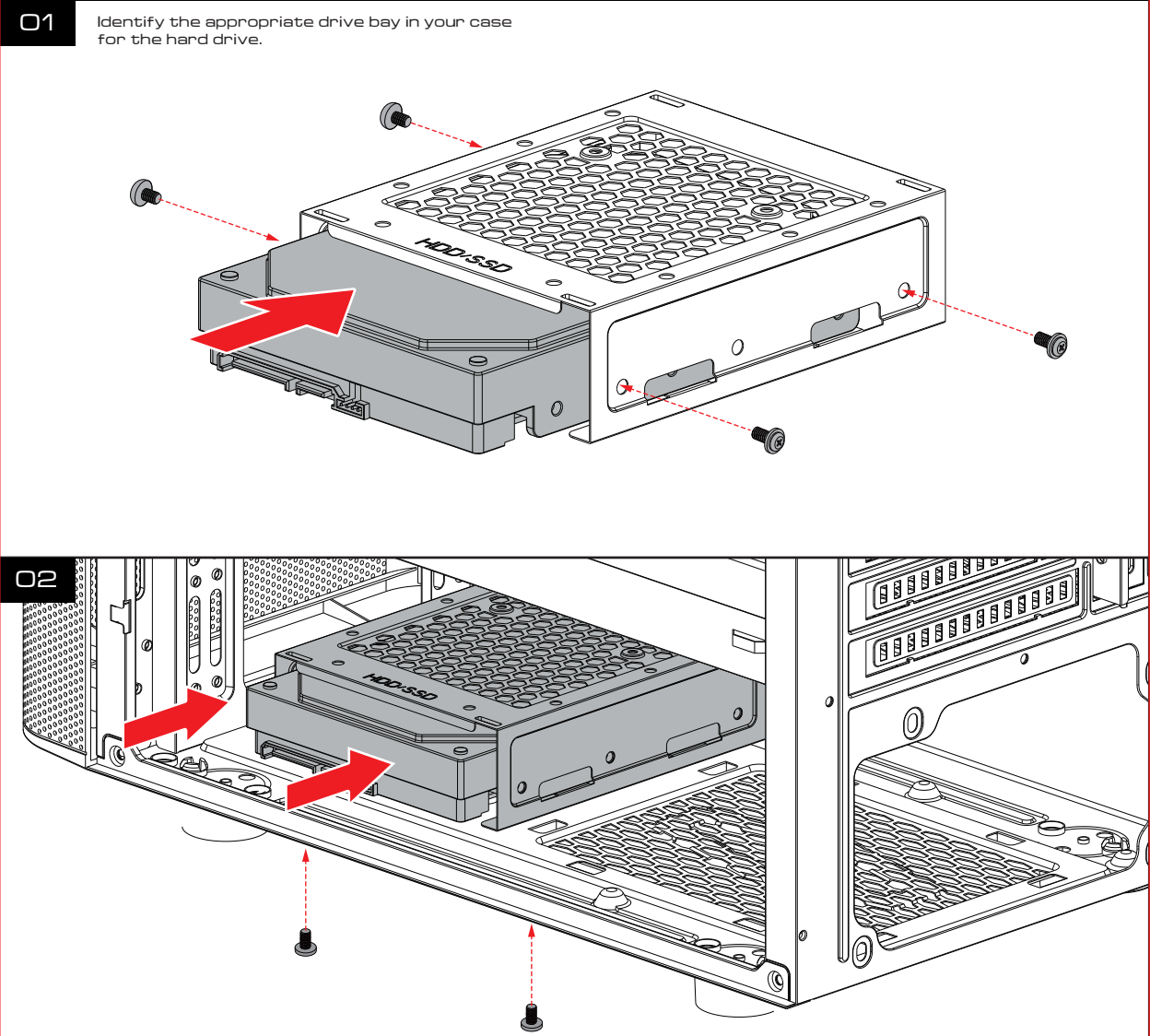
▼ GPU Installation



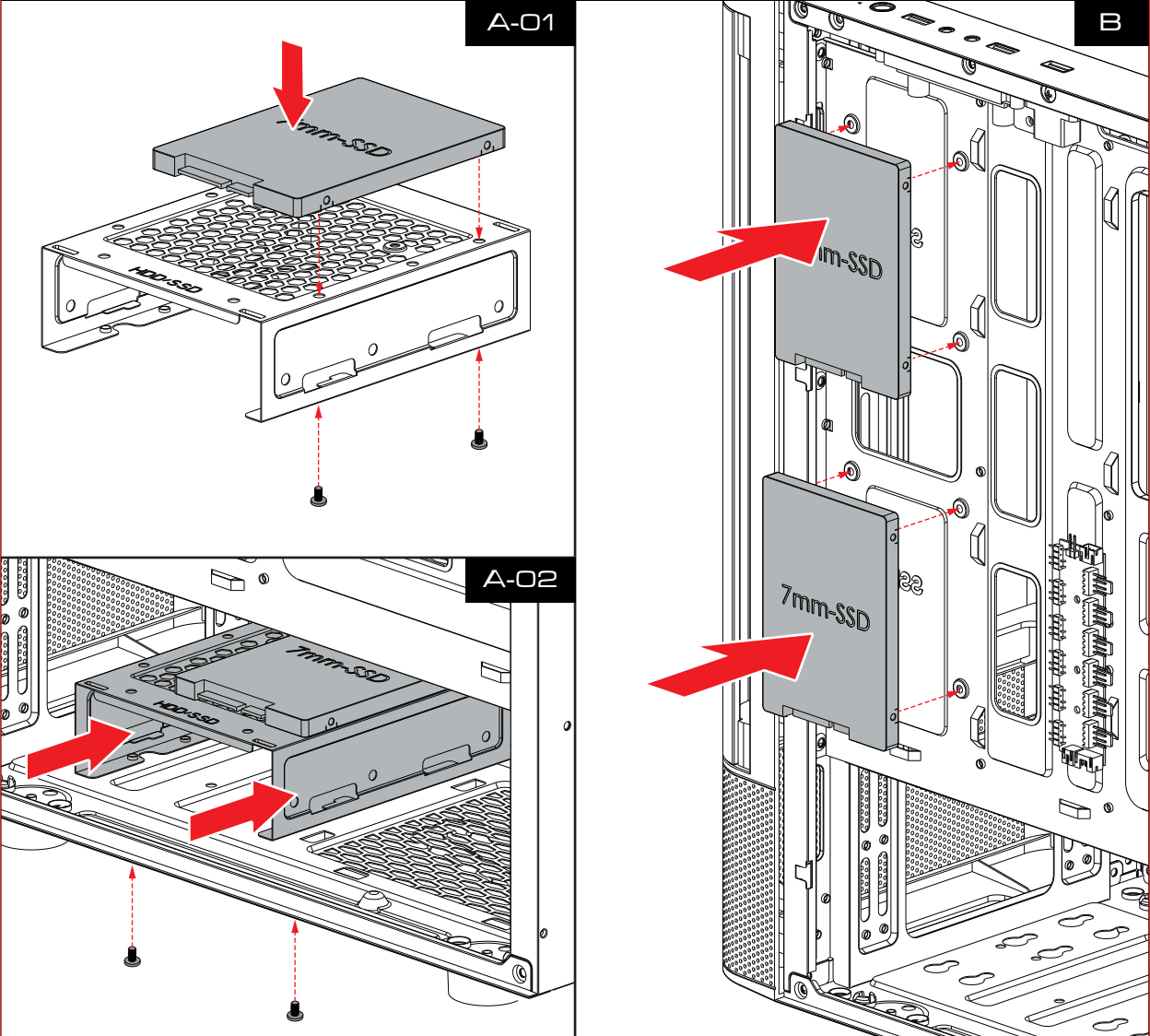
▼ GPU Installation



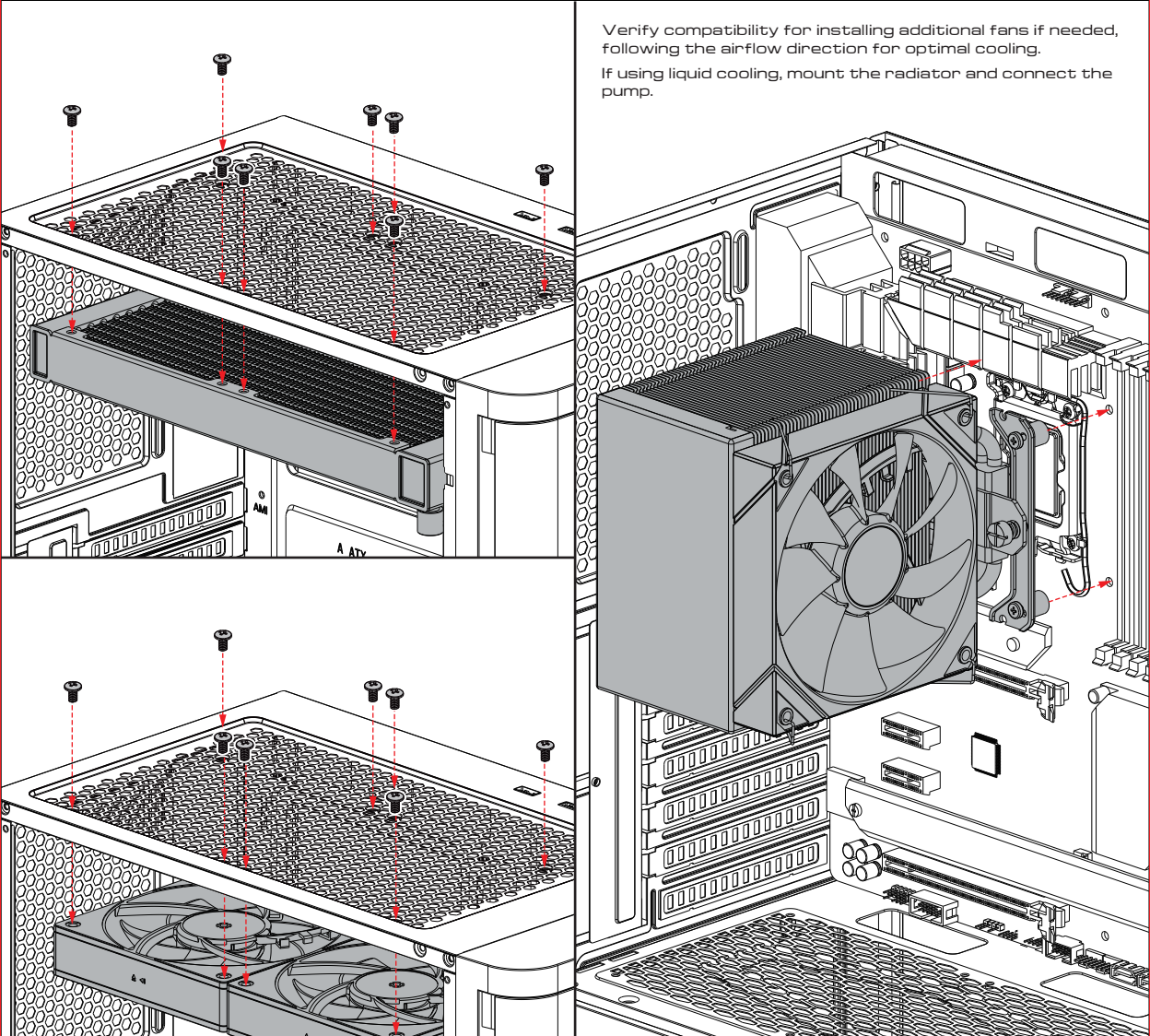
▼ HDD Installation



▼ SSD Installation



▼ Fan and Cooling System Setup



▼ Case Layout and Parts Identification

